



TAMPERTECH

stock pallet secure SECURITY SOLUTION

Pallets in transit are vulnerable to theft and tampering. This has resulted in the design of this tamper evident permanent label. Designed to protect the banding or strapping of the pallet whether poly or metal strapping.

Preventing manipulation of the strapping and removal of pilferage of the inner cartons on the pallet. One label that can protect four cartons intersecting on the side of the pallet.

The label can be applied anytime in the transit stream; at the shippers, distribution center, cross dock etc., over or under the stretch wrap.

This label has a writable area for Shippers name, Facility information, Bill of Lading/Manifest, number of pieces on the pallet and can be overprinted with sequential numbers to provide identity and chain of custody in transit.

The individual details on the labels ensure they can not be copied and used inappropriately.



Label options:

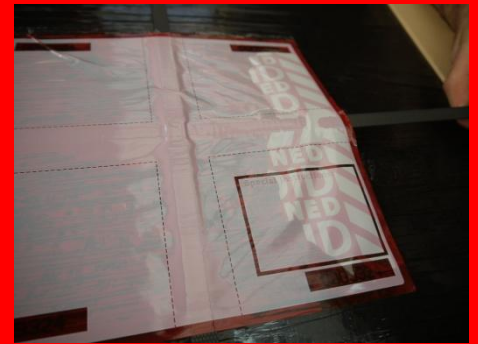
- Overprinting message available including Customer logo, special alpha/numeric text, Barcodes...
- Target areas for RFID and Temperature Logger coverage
- Red

Label dimensions:

- 220mm x 220mm

Packs of 100

Minimum order quantity 1000 for stock product

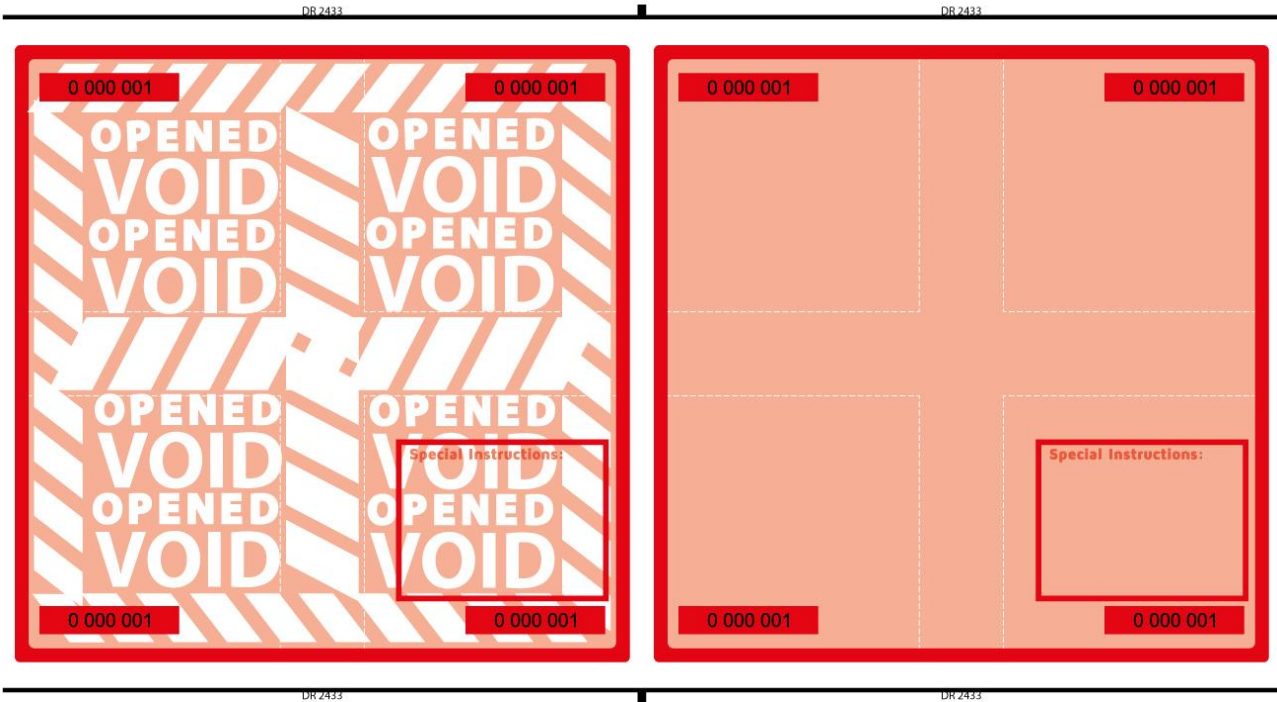


to order this product
please use reference

DR2433

DR 2433

Tamper evident label made from **50 micron BOPP**, 220mm x 220mm, 4 x sequential numbers and print design every 228.6mm, Red base with text reversed out of white contrast panel.
Packaging: TPD.



Please contact us:

Phone: +44 1335 300335

Email: orders@tampertech.com
or chris@tampertech.com