



TAMPER TECHNOLOGIES

TAMPER
EVIDENCE IN
COLD CHAIN
SUPPLY

WWW.TAMPERTECH.COM

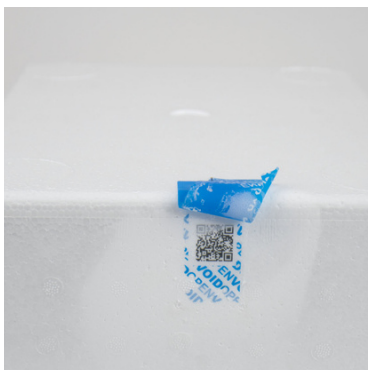
CHAPTER I

Layer Your Tamper Evidence



Layer One: Cold Chain Box Tape

Box tape for use in the cold chain supply requires levels of stability for confidence. This tamper-evident box tapes provide a sophisticated yet simple solution, protecting your products with clear visual indicators for instant verification and validation. Their robust effectiveness ensures the integrity and security of your cargo throughout its journey. These tapes can “fit in” with your existing processes and bring additional security features with numbers, QR and barcodes as well as a customised void.



Layer Two: Secure Labels for Insulated Boxes

Maintaining the integrity of temperature-sensitive products during transportation and storage is of paramount importance. Whether it's pharmaceuticals, vaccines, perishable foods, or any other temperature-sensitive goods, the need for assurance and security is critical. Cold Chain Tamper-Evident Labels with Sub-Surface QR Codes, provide the ideal solution to safeguard your products and ensure their journey through the cold chain is reliable and secure.




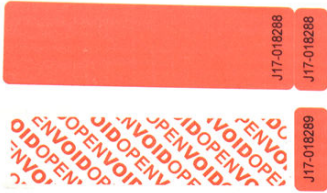
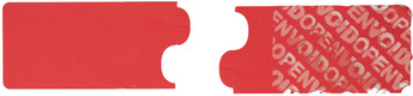
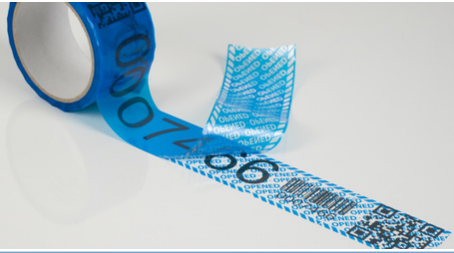

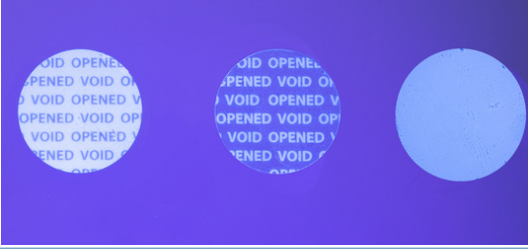


Layer 3: Pallet Tape

We take cold chain supply security to the next level with our tamper-evident pallet secure tape. With a clear and bold “Pallet Secured Security Tape Active” surface message, it ensures that your Standard Operating Procedure (SOP) is crystal clear to everyone involved in the shipping process. The tape's permanent custom security message leaves no room for ambiguity, making it evident that your shipments are protected.

Our tape's exceptional performance at extreme cold temperatures, withstanding chilling conditions as low as -80°C , ensures that your shipments remain secure and uncompromised even in the harshest environments.

CHAPTER II

Make It Yours

<p>QR CODE</p>	<p>RECEIPT TABS</p>
	
<p>SECURITY CUTS</p>	<p>SUBSURFACE BARCODES & NUMBERS</p>
	
<p>THERMOCHROMIC INK</p>	<p>UV INK</p>
	
<p>FINGER LIFT EDGES</p>	<p>HOLOGRAMS</p>
	

CHAPTER III

Why tamper evidence?

Case Study: Ensuring Product Integrity with Tamper-Evident Box Tape in the Cold Chain

The Challenge:

NovaCure, a leading distributor of temperature-sensitive pharmaceuticals, faced a critical challenge in their cold chain supply chain. Maintaining product integrity and preventing tampering throughout the journey, from manufacturing to final delivery, was paramount. However, traditional packing tape offered limited security, leaving them vulnerable to potential product contamination or even counterfeiting.

The Solution:

NovaCure implemented a solution using tamper-evident box tape specifically designed for the cold chain. This tape featured several key security features: Void message, Unique numbering and Temperature resistance, the tape adhered securely and maintained its tamper-evident properties even under challenging cold chain temperatures.

The Results:

NovaCure observed several significant benefits after switching to tamper-evident box tape:

- **Enhanced security:** The visible void message acted as a strong deterrent against unauthorised access, significantly reducing the risk of tampering and product contamination.
- **Improved chain-of-custody:** Unique serial numbers facilitated accurate tracking and record-keeping throughout the supply chain, pinpointing exactly where and when a box might have been tampered with.
- **Increased customer confidence:** The visible security features reassured customers about the authenticity and integrity of their medications, boosting brand trust and satisfaction.
- **Operational efficiency:** Easy application and clear tamper-evident indicators streamlined inspections and sped up security checks at checkpoints.
- **Reduced costs:** By minimising product losses and streamlining security processes, NovaCure experienced significant cost savings.



Overall, NovaCure's experience demonstrates the substantial benefits of using tamper-evident box tape in the cold chain. This solution provided enhanced security, improved chain-of-custody control, increased customer confidence, and improved operational efficiency, ultimately contributing to a more secure and reliable cold chain for temperature-sensitive pharmaceuticals.