

TAMPERTECH Teaches:

What is a Permanent Void?

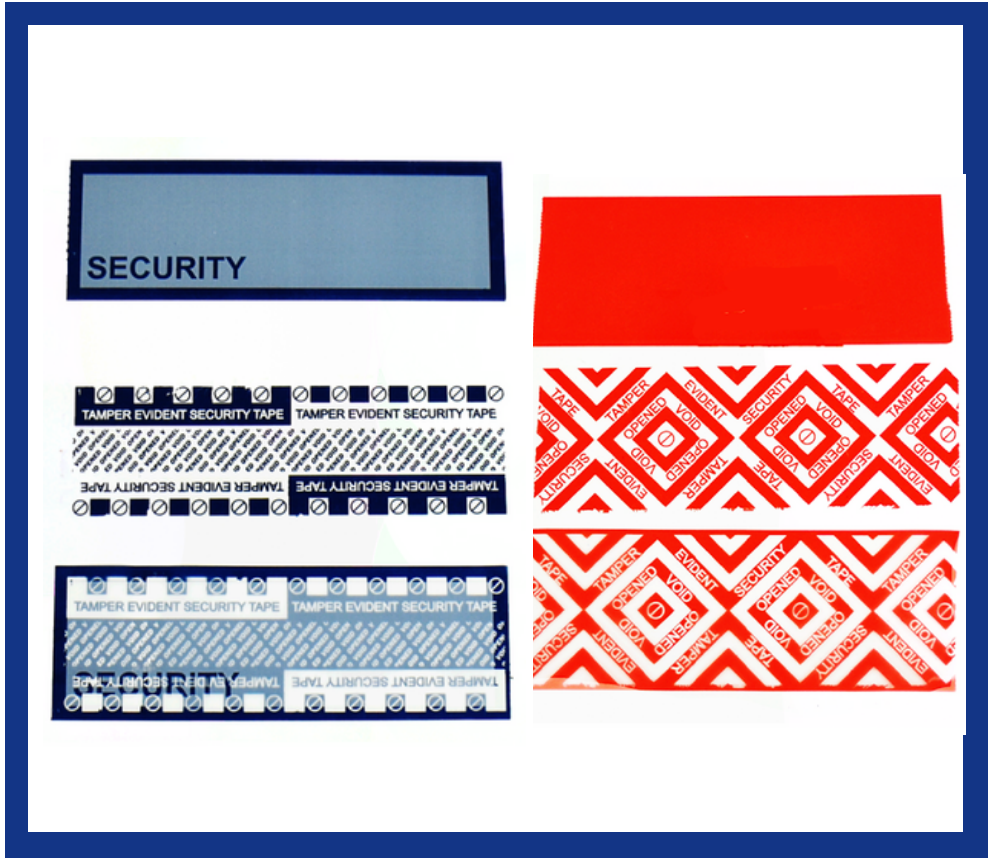
Tamper evident tapes and labels can have a range of different void styles one of which is permanent.

So, what is a permanent void?

This is when our labels or tapes are voided from tampering or removal of the product a void message is left behind on the surface of whatever it has been stuck too.

Permanent void products can also offer surface and sub-surface printing offering total customisation with the ability to leave your logo behind when our products have been removed.

If you have any other questions about our permanent void's do get in touch!



See Permanent Void in action here ➡

