

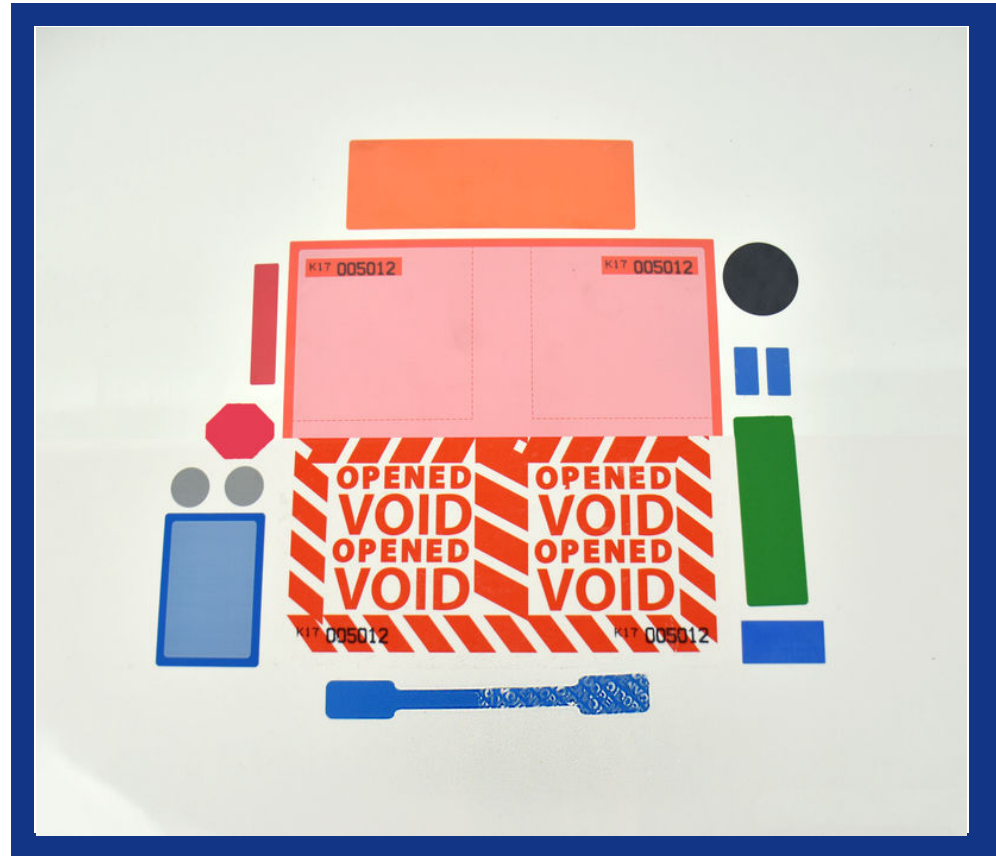
TAMPERTECH Teaches:

What is Die Cutting?

Tamper evident labels can come in an unlimited range of shapes and sizes, but how?

At TamperTech to make sure we can shape our labels consistency and accurately through a process using whats called a "Die Plate" which effectively stamps out each label.

This process for custom shapes or sizes can come at a one off cost as a specialist die plate needs to be manufactured and then we are able to use that plate for as long as the die plates are within their lifespan.



If you have any other questions about how our die plates work do get in touch!