

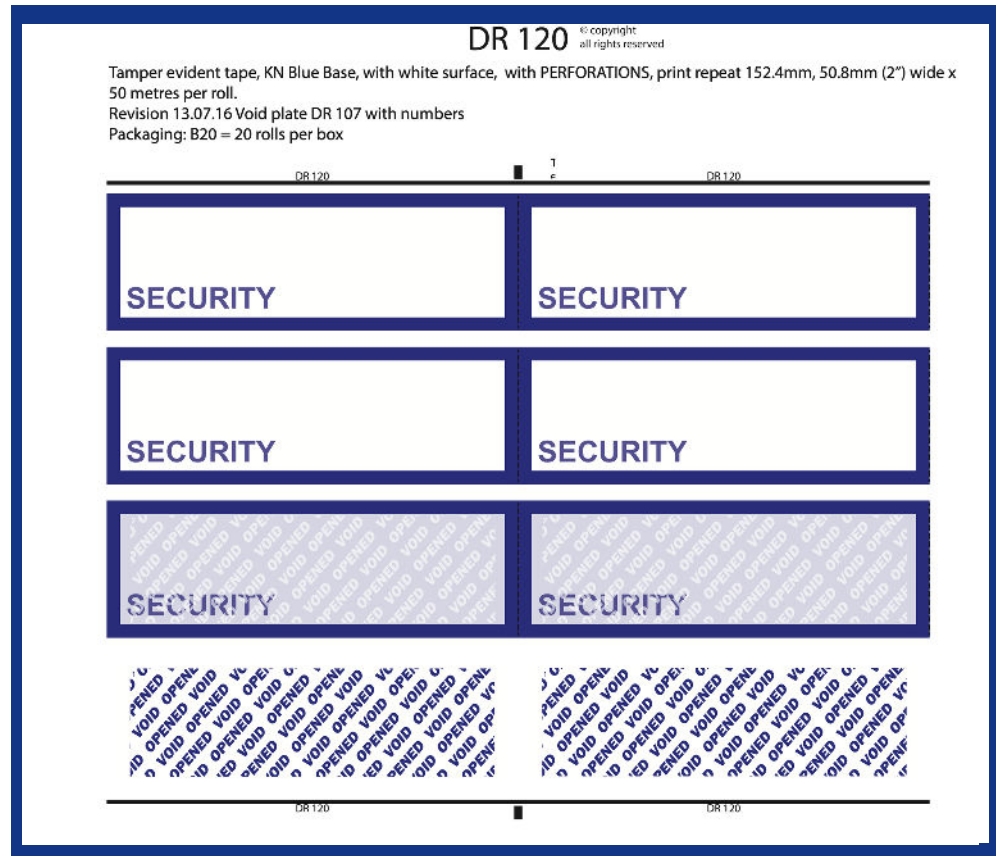
TAMPERTECH Teaches:

What is a DR?

A DR is a Design Reference, everything that we make has one of these and each one has key information:

- 1** A description of the key elements of the product including e.g. size, colour, packaging
- 2** A visual of what the product will look like on the roll.
- 3** A visual of the product voided
- 4** A visual of the void message itself

Every time an order is placed a DR is attached to ensure we make what you want



If you have any other questions about our DR's get in touch!