

# LABELS FOR PET FOOD PROTECTION

These tamper evident labels are designed to seal a wide range of pet food containers food safe in transit.

## INDIVIDUALISE YOURS

The label size and shape can be product-specific to fit in with your needs.

The labels can be coloured or clear, with additional security features from security cuts, special inks including UV and thermochromic through to sequential numbering, QR and barcodes.



PRODUCT DATA	
Core ID	76mm
Film	50µ BOPP
Tensile Strength (MD) ASTM D 882 @ 50%/min	210 MN/m²
Elongation at Break (MD) ASTM D 882 @ 50%/min	85%
Adhesive	Formulated Hot Melt
Adhesive Thickness	30 – 45gsm
Softening Point (Mettler Drop Point)	92°C
SAFT	59°C
Peel (20min, glass)	35N / 25mm
Peel (24 hours, glass)	35N / 25mm
Tack (Glass)	60N / 25mm
Packaging	Rolls packed in 36 rolls per box, dependent on roll length and width
Recommended Application Temperature	+15°C - 25°C
Storage	Dry conditions between 10°C-20°C, kept in the box out of direct sunlight
Note #1 Tests carried out using 50µ PET 40gsm – tests cannot be carried out using tamper evident product as the tape is designed to split into 2 parts	
Note #2 The ingredients of the adhesive meet the compositional requirements of the American Food & Drug Administration regulations 21CFR 175.105	
Note #3 This product is not designed for direct food contact	

# SAMPLES OF LABELS

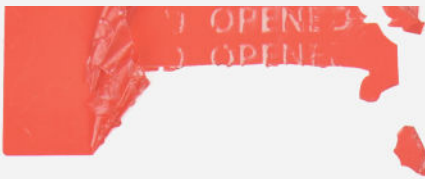
THESE LABELS ARE PERMANENT



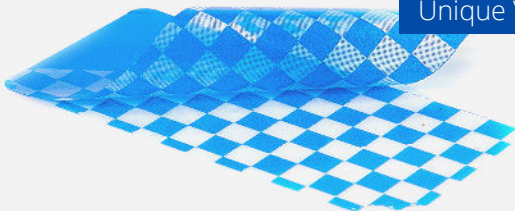
Security Cuts



Dissolving



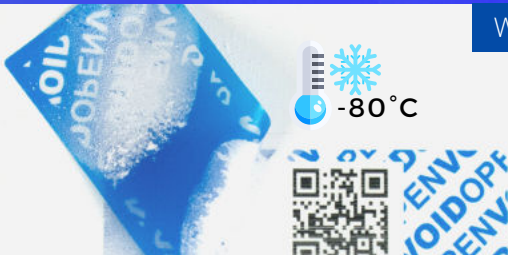
Unique Void



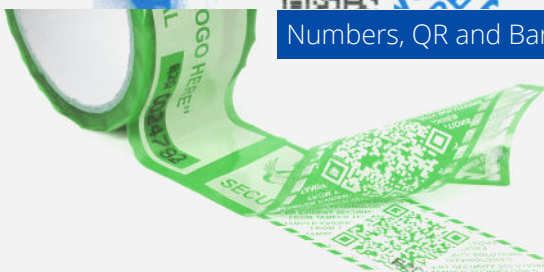
Special UV Ink



Works Cold



Numbers, QR and Barcodes



## KEY BENEFITS

# LAYERED SECURITY FOR SUPPLY CHAIN PROTECTION TODAY!

## PRACTICAL SOLUTIONS

- **Simple to integrate into existing processes** - no cost to change
- **Adds to brand reputation** - fully customisable
- **Supports product traceability** - sequential numbering and QR codes
- **Key indicator for tampering** - cannot be copied or reapplied
- **Technical security solutions** - covert features
- **Flexibility through individual designs** - in-house artwork team
- **Our tamper evident performance still works cold** - down to -80°C

### Minimum Order Quantities:

Labels = 1000

Custom Tapes = 80 Rolls

Stock Tapes = 20 Rolls

### Custom Tooling:

Printing Plates - £120 (one off)

Cutting Tools - £200 (one off)

Visit [www.tampertech.com/welcome](http://www.tampertech.com/welcome)  
for more information about tamper evident  
solutions call +44(0)1335 300335  
or email [harriet@tampertech.net](mailto:harriet@tampertech.net)

# LABELS FOR PET PHARMACEUTICALS

These tamper evident labels are designed to seal a wide range containers and boxes

## INDIVIDUALISE YOURS

The label size and shape can be product-specific to fit in with your needs.

The labels can be coloured or clear, with additional security features from security cuts, special inks including UV and thermochromic through to sequential numbering, QR and barcodes.



PRODUCT DATA	
Core ID	76mm
Film	50µ BOPP
Tensile Strength (MD) ASTM D 882 @ 50%/min	210 MN/m²
Elongation at Break (MD) ASTM D 882 @ 50%/min	85%
Adhesive	Formulated Hot Melt
Adhesive Thickness	30 – 45gsm
Softening Point (Mettler Drop Point)	92°C
SAFT	59°C
Peel (20min, glass)	35N / 25mm
Peel (24 hours, glass)	35N / 25mm
Tack (Glass)	60N / 25mm
Packaging	Rolls packed in 36 rolls per box, dependent on roll length and width
Recommended Application Temperature	+15°C - 25°C
Storage	Dry conditions between 10°C-20°C, kept in the box out of direct sunlight
Note #1 Tests carried out using 50µ PET 40gsm – tests cannot be carried out using tamper evident product as the tape is designed to split into 2 parts	
Note #2 The ingredients of the adhesive meet the compositional requirements of the American Food & Drug Administration regulations 21CFR 175.105	
Note #3 This product is not designed for direct food contact	

# SAMPLES OF LABELS

THESE LABELS ARE PERMANENT

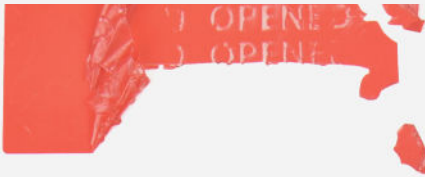




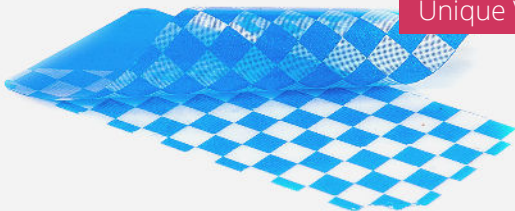
Security Cuts



Dissolving



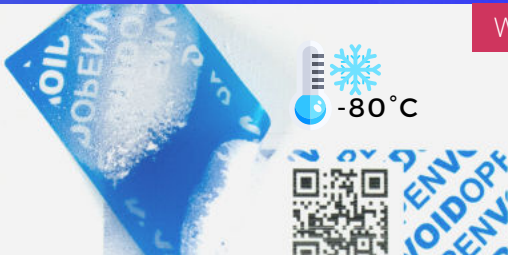
Unique Void



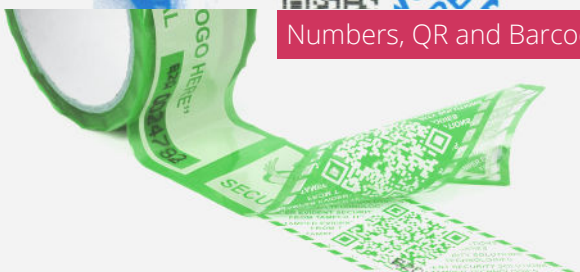
Special UV Ink



Works Cold



Numbers, QR and Barcodes



## KEY BENEFITS

# LAYERED SECURITY FOR SUPPLY CHAIN PROTECTION TODAY! PRACTICAL SOLUTIONS

- **Simple to integrate into existing processes** - no cost to change
- **Adds to brand reputation** - fully customisable
- **Supports product traceability** - sequential numbering and QR codes
- **Key indicator for tampering** - cannot be copied or reapplied
- **Technical security solutions** - covert features
- **Flexibility through individual designs** - in-house artwork team
- **Our tamper evident performance still works cold** - down to -80°C

### Minimum Order Quantities:

Labels = 1000  
Custom Tapes = 80 Rolls  
Stock Tapes = 20 Rolls

### Custom Tooling:

Printing Plates - £120 (one off)  
Cutting Tools - £200 (one off)

Visit [www.tampertech.com/welcome](http://www.tampertech.com/welcome)  
for more information about tamper evident  
solutions call +44(0)1335 300335  
or email [harriet@tampertech.net](mailto:harriet@tampertech.net)

# LABELS FOR PALLETS

These tamper evident labels are designed to protect banding and strapping of pallets to prevent removal of inner cartons.

The label can be applied anytime in the transit stream; at the couriers, distribution center, cross dock etc., over or under the stretch wrap banding

## INDIVIDUALISE YOURS

The individual details on the labels ensure they cannot be copied and used inappropriately. Overprinted with custom logo, alpha numeric text, barcodes, sequential numbers.



### PRODUCT DATA

Core ID	76mm
Film	50μ BOPP
Tensile Strength (MD) ASTM D 882 @ 50%/min	210 MN/m <sup>2</sup>
Elongation at Break (MD) ASTM D 882 @ 50%/min	85%
Adhesive	Formulated Hot Melt
Adhesive Thickness	30 – 45gsm
Softening Point (Mettler Drop Point)	92°C
SAFT	59°C
Peel (20min, glass)	35N / 25mm
Peel (24 hours, glass)	35N / 25mm
Tack (Glass)	60N / 25mm
Packaging	Rolls packed in 36 rolls per box, dependent on roll length and width
Recommended Application Temperature	+15°C - 25°C
Storage	Dry conditions between 10°C-20°C, kept in the box out of direct sunlight

Note #1 Tests carried out using 50μ PET 40gsm – tests cannot be carried out using tamper evident product as the tape is designed to split into 2 parts

Note #2 The ingredients of the adhesive meet the compositional requirements of the American Food & Drug Administration regulations 21CFR 175.105

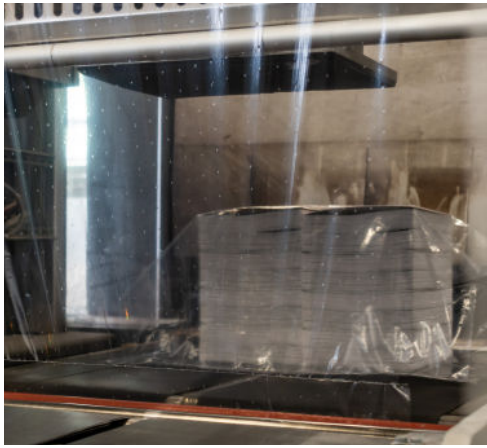
Note #3 This product is not designed for direct food contact

## KEY BENEFITS

LAYERED SECURITY FOR SUPPLY CHAIN PROTECTION TODAY!

## PRACTICAL SOLUTIONS

- **Simple to integrate into existing processes** - no cost to change
- **Adds to brand reputation** - fully customisable
- **Supports product traceability** - sequential numbering and QR codes
- **Key indicator for tampering** - cannot be copied or reapplied
- **Technical security solutions** - covert features
- **Flexibility through individual designs** - in-house artwork team
- **Our tamper evident performance still works cold** - down to -80°C



# SAMPLES OF LABELS

THESE LABELS ARE PERMANENT  
PROTECTS PALLET  
LAYERED SECURITY HIGHLY  
VISIBLE

LABEL DIMENSIONS 220MM X  
220MM

**Minimum Order**

**Quantities:**

Labels = 1000

Custom Tapes = 80 Rolls

Stock Tapes = 20 Rolls

**Custom Tooling:**

Printing Plates - £120 (one off)

Cutting Tools - £200 (one off)

Visit [www.tampertech.com/welcome](http://www.tampertech.com/welcome)  
for more information about tamper evident  
solutions call +44(0) 1335 300335  
or email [harriet@tampertech.net](mailto:harriet@tampertech.net)