

TAMPERTECH Teaches:

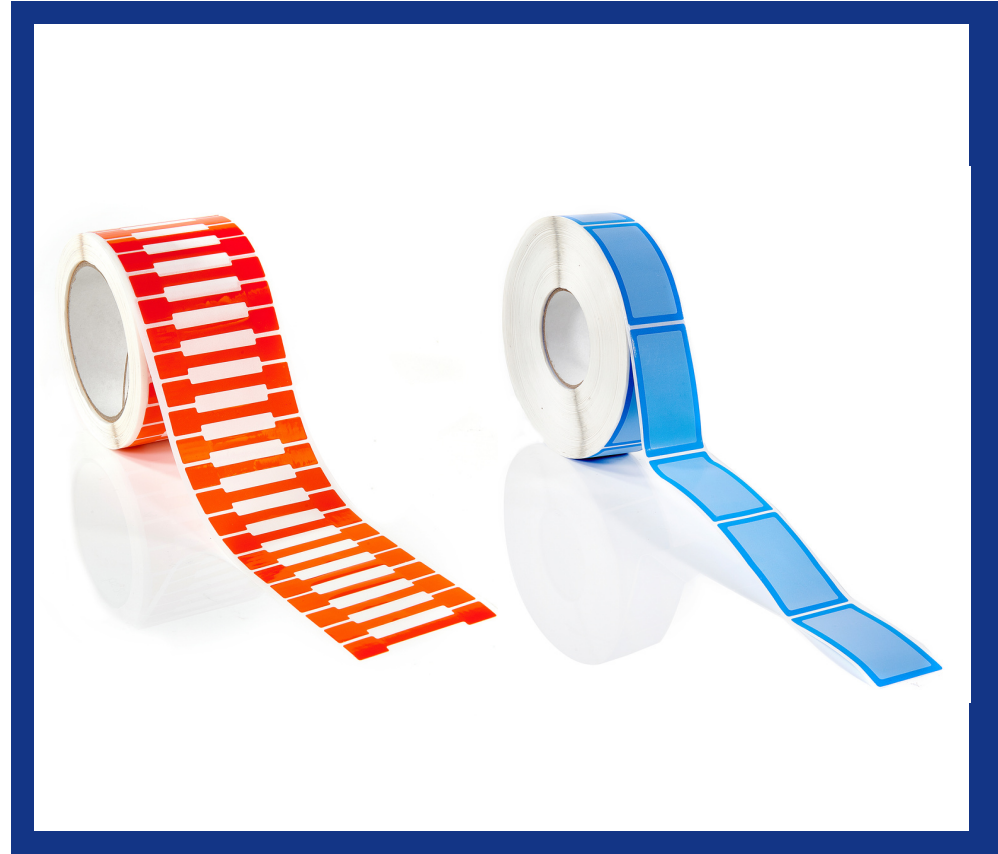
What is Narrow Edge Leading (NEL) and Wide Edge Leading (WEL)?

Tamper evident labels can have a range of different sizes and shapes, but are cut the same way

So, what is NEL and WEL?

Narrow Edge Leading (NEL) - the blue labels in this image, is when the labels are cut out narrow edge first, this means the rolls will be skinnier but longer than a WEL roll, making the labels easier to apply by a machine.

Wide Edge leading (WEL)- orange dumbbell labels in this image, allows you to fit more labels per roll when compared to a roll of NEL, and can allow for more efficient shipping in some circumstances.



If you have any other questions about our NEL and WEL do get in touch!