

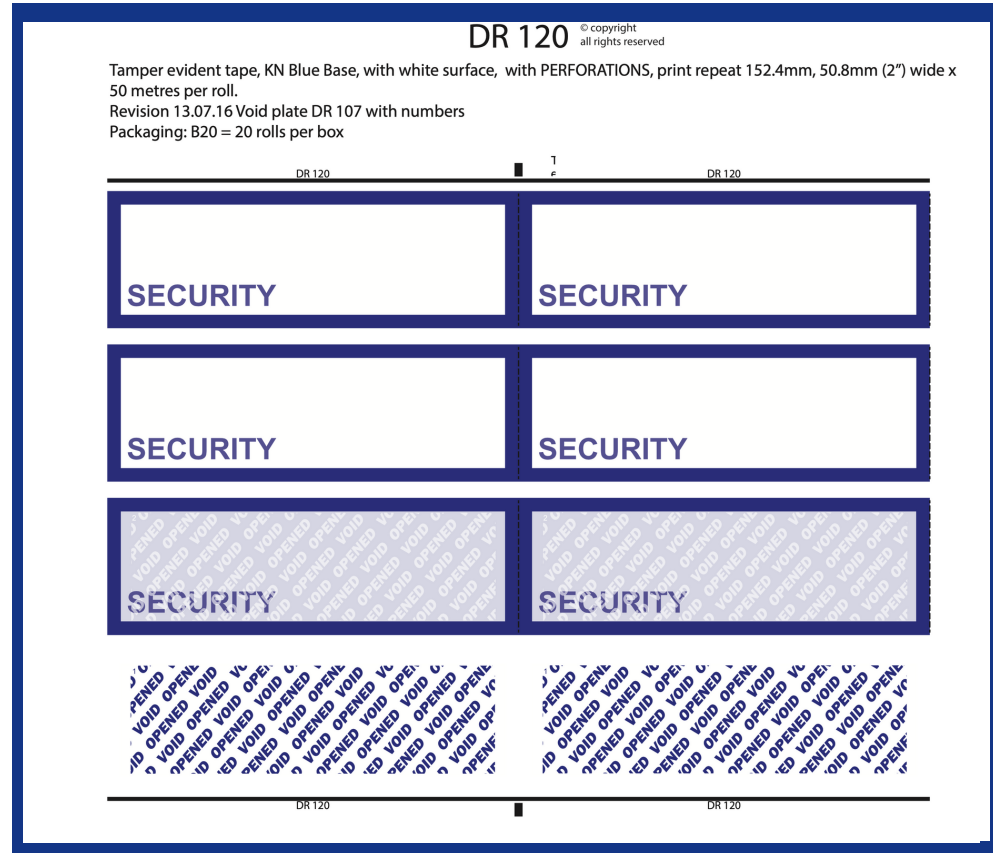
# TAMPERTECH Teaches:

## What is a DR?

**A DR is a Design Reference, everything that we make has one of these and each one has key information:**

- 1 A description of the key elements of the product including e.g. size, colour, packaging
- 2 A visual of what the product will look like on the roll.
- 3 A visual of the product voided
- 4 A visual of the void message itself

Every time an order is placed a DR is attached to ensure we make what you want



**If you have any other questions about our DR's get in touch!**